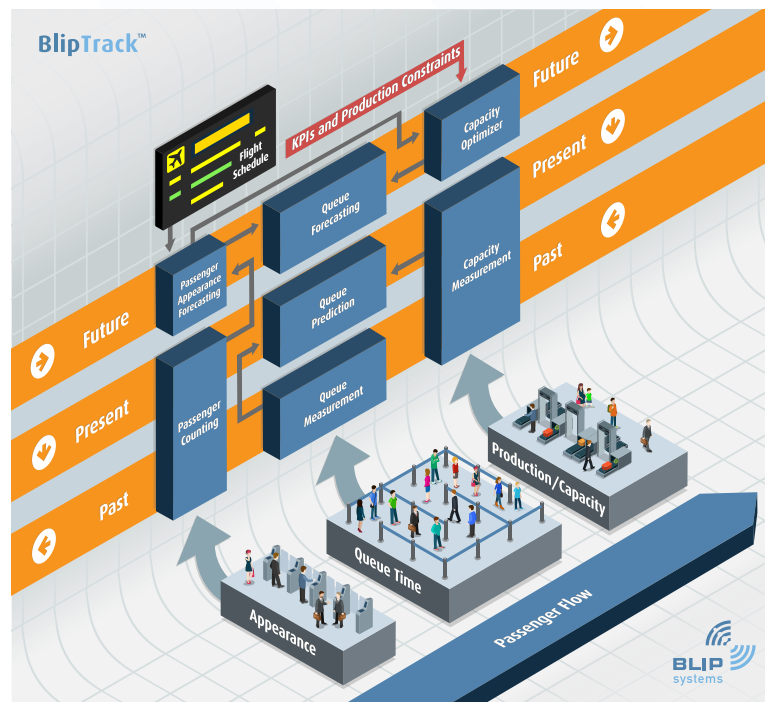


BlipTrack

Capacity Optimizer

The Capacity Optimizer Module allows managers to continuously optimize the number of open lanes required to meet current KPIs.

The module combines a series of inputs such as passenger appearance forecasts, target KPIs, available capacity and employment agreements, such as minimum deployment times, time between breaks and more.



The “live” version of the module enables the airport to optimize the available capacity using the least amount of resources without violating KPIs or compromising the passenger experience.

In addition, it is possible to analyze historic throughput from existing passenger process systems and passenger appearance volume data, from either the BlipTrack Passenger Appearance Forecast Module or existing forecasts. This

“long-term” version of the module allows managers to forecast and plan capacity for days, weeks and months to come.

The BlipTrack forecasting solution consists of several advanced modules, which are designed to optimize and improve all the stages of passenger handling. The modules can be combined or used separately and are easily integrated with existing airport management systems.

BlipTrack delivers reporting capabilities to stakeholders with live and historical information in a web-based, intuitive user interface with graphs and dashboard views. The analysis platform enables data extraction in any combination and is exportable in various formats, allowing quick and efficient integration into existing management systems.

A dynamic management of resources reduces costs for all operational stakeholders, improves passenger satisfaction and non-aeronautical revenue, and ensures a first-class airport image.

